

A.D. 1308   
**unipg**

DIPARTIMENTO  
DI INGEGNERIA  
CIVILE E AMBIENTALE

# DOCTORAL TRAINING PROGRAM AND EDUCATIONAL ACTIVITIES

March 26-th 2025

Filippo Ubertini

## INTRODUCTION

**Objectives:** how to setup a training program and organize your educational activities

### **Mandatory reading:**

Guidelines for the Definition of Teaching and Training Activities in the Context of PhD Programs



**Welcome to the new PhD students!**

## OVERVIEW & TRAINING OBJECTIVES

Structure of the doctoral school

Different PhD programs/research areas

General objectives of the PhD training

### Training objectives

- ✓ Development of research and methodological skills
- ✓ Interdisciplinary approach and collaborations
- ✓ Enhancement of soft skills and professional development



## EDUCATIONAL AND TRAINING ACTIVITIES

- ✓ Research project
- ✓ Core and elective courses
- ✓ Workshops, seminars, and summer schools
- ✓ Conferences and research dissemination
- ✓ Public engagement and outreach



# EDUCATIONAL AND TRAINING ACTIVITIES

Individual training program:

**1. Development of an individual research project (about 150 ECTS)**

**2. Participation in doctoral-level educational activities (>30 ECTS)**

**3. Engagement in other training activities (contribute to student's academic development but no ECTS credits)**

Tab. 1. Typology of teaching activities

Type	Expected cfu (minimum/student/cycle)
A. Frontal teaching provided by the PhD Course	at least 12 cfu
B. Frontal teaching provided by other PhD courses	
C. Frontal and cross-disciplinary teaching at the University and/or other Doctorate Course, also at another University, with a multi/inter/trans-disciplinary character	at least 6 cfu
D. Conference activities and doctoral schools	at least 3 cfu
<b>TOTAL</b>	<b>at least 30 cfu</b>

Table 2. Recognition and allocation of cfu to different types of teaching activities

Type of teaching activity	Acknowledgement
Frontal teaching provided by own course or other courses (A, B and C)	1 cfu every 6 hours
Frontal teaching provided by foreign doctoral courses (B and C)	1.5 cfu every 6 hours
Doctoral schools (D)	1 cfu each day
National conferences (D)	0.5 cfu each day
International conferences (D)	1 cfu each day
Seminars (A, B and C)	1 cfu every 6 hours
Seminars abroad attended (B and C)	1.5 cfu every 6 hours

## EDUCATIONAL AND TRAINING ACTIVITIES

Other training activities -> contribute to PhD student final assessment (pre-defense)

- Teaching assistantships (max 40 hours/year)
- Support to a bachelor/master course
- Tutoring activities
- Engagement in orientation events of the Department
- **Presentations in scientific conferences**
- Participation in journal clubs
- Other training activities (specific)



## SUPERVISION AND MENTORSHIP

- Role of supervisors and advisors
- Regular progress meetings / feedback
- Support for thesis development and publications



# MOBILITY AND INTERNATIONAL COLLABORATIONS

Opportunities for research stays abroad

Joint research with international institutions

Funding for mobility programs





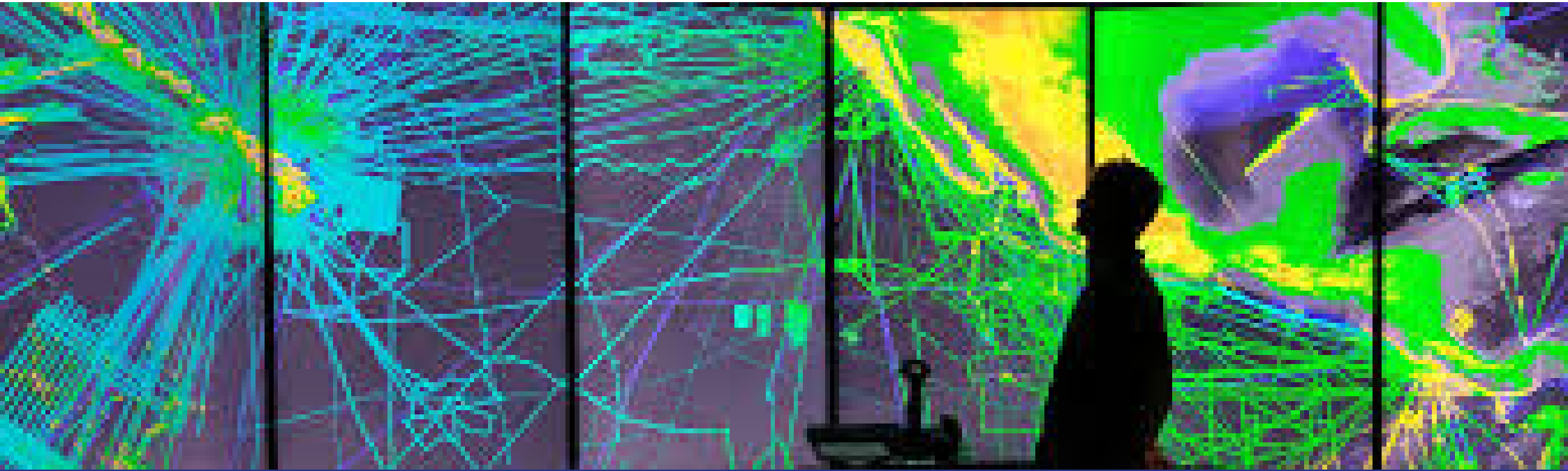
## RESEARCH RESOURCES AND TOOLS

Access to laboratories, libraries, and computational tools

Scientific databases and institutional repositories

Research collaboration platforms

Top 3 list:  
read, read and  
read!

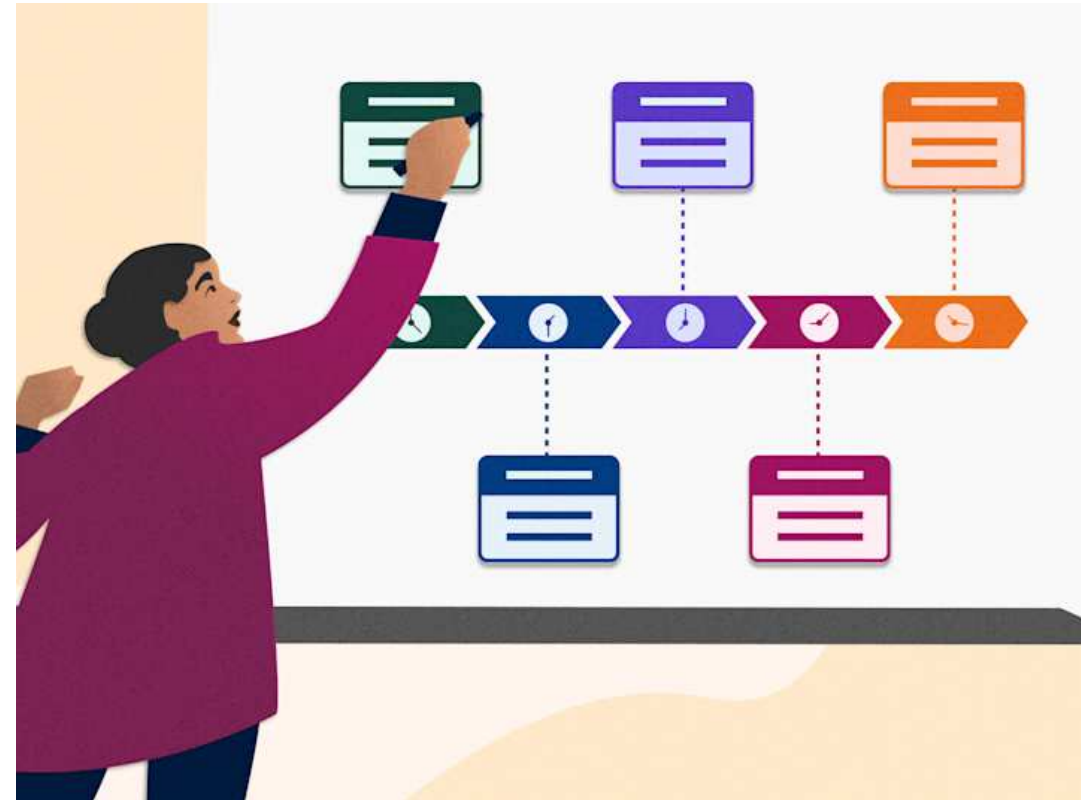


## EVALUATION AND PROGRESS

### Key milestones in the PhD journey

- Annual assessments and progress reports – annual presentations
- Preparation for thesis defense (pre-defense)
- The assessment of the Faculty Board
- The 2 independent reviews on the Thesis
- The defense and the final assessment

Note: title can be in Cotutelle, Europeus, International.



Hint: timeline is important! Train mostly in 1<sup>st</sup> and 2<sup>nd</sup> year (training is instrumental to research), international travel suggested in 2<sup>nd</sup> year, third year is for thesis and journal publications

## CAREER OPPORTUNITIES

- Collaboration/relationships with companies
- Academic and postdoctoral career paths
- Industry, government, and private sector opportunities
- Entrepreneurship and innovation possibilities



## CONCLUSIONS AND Q&A

Summary of key  
takeaways

Contact details for  
doctoral school support

[ufficio.dottorati@unipg.it](mailto:ufficio.dottorati@unipg.it)

Open Q&A session

